

## WHAT'S NEW?

New features and functionality since v5.0

### A new name



With a fundamental change in hypervisor support (the addition of VMware), Altaro Hyper-V Backup made way for a new name that reflects the capabilities of our flagship product.

Hello [Altaro VM Backup](#)!

**HYPER-V** Backup



**VMBACKUP**  
Hyper-V | VMware

	<b>Microsoft Hyper-V</b> Microsoft Hyper-V Host or Failover Cluster
	<b>VMware ESXi Hypervisor</b> Connect directly to a VMware ESXi hypervisor
	<b>VMware vCenter Server</b> Connect to a vCenter Server and protect all ESXi hypervisors n

### Highly capable VM solution for both Hyper-V and VMware

Altaro VM Backup is a logical evolution from a backup solution that excelled at protecting Microsoft Hyper-V virtual machines, to a solution that offers full support for both Hyper-V and VMware.

Managing VM backups and restores has never been easier, offering the ability to back up VMs from hosts running VMware as well as those running Hyper-V. All from a single console, with all the functionality you need to help you set up rock solid backup strategies on both hypervisors.

VMware administrators are now able to back up VMware VMs in the same way that Hyper-V administrators are used to from us: Hassle-free.



Hassle-free  
and effective



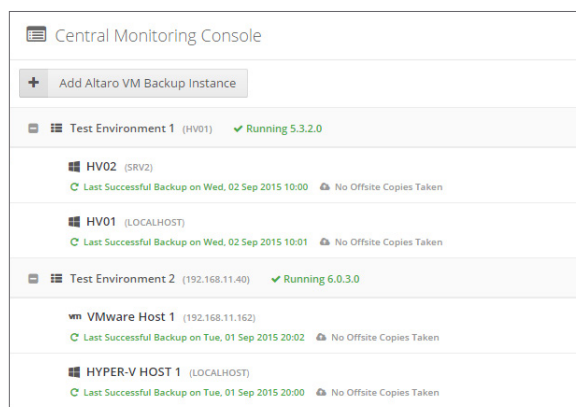
Unbeatable  
value



Outstanding  
Support

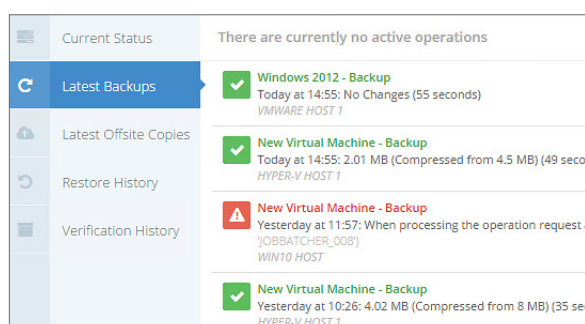
## Centralized Configuration and Management of Multiple Hosts

With a user interface built for scalability, managing and configuring backup/restore jobs across multiple hosts has never been simpler. You can manage and control backups for all of your hosts from a single console, without the need to manage configurations for individual hosts.



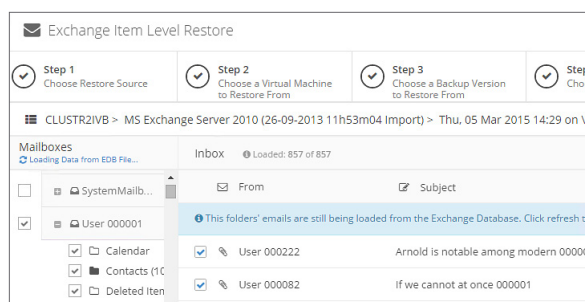
## Host Level Concurrency for Faster Backups

We have added the ability to run backups from multiple hosts concurrently, thus drastically reducing the time taken to backup multiple Host scenarios.



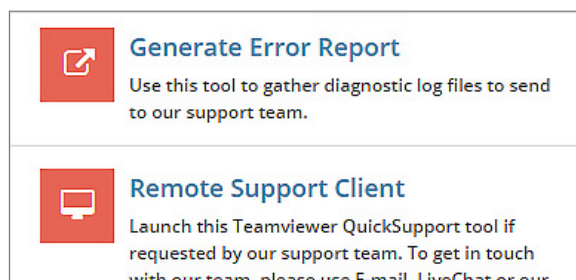
## Various performance improvements

We've made big steps in improving performance for Exchange Item and File Level Restore, making granular restores much faster to accomplish.



## Auto-upload Error Reports

Generate and automatically submit Error Reports from the Altaro console directly to our support team for quick and easy assistance.



## Live Chat embedded in the Altaro Console

Get in touch with our support team directly from within the application itself. Easy access to our premium support service and a commitment to you, our user, to get the support you need, when you need it.

